



微信公众账号



FACEBOOK

安徽长庚光学科技有限公司

www.laowalens.com

服务热线:400-066-1316

Email: sales@laowalens.com

电话Tel:(+86) 0551-69107990

地址:合肥市庐阳区天水路与太和路交叉口庐阳中科大校友创新园5号楼

Add: Building 5, USTC Alumni Innovation Park, Crossing of Tianshui
and Taihe Road, Luyang District, Hefei City, Anhui Province, China

OOM 25-100mm t/2.9

Zoom

使用手册

Instruction Manual

LAOWA 老蛙

本公司保留更改产品设计与规格的权利, 届时恕不另行通知;
本公司保留对此《使用说明》的最终解释权。

Please note we reserve the right to change our product's
design and specifications at any time without notice and
to the final interpretation of the *Instruction Manual*.



Preface

Thank you very much for purchasing OOOM 25-100mm t/2.9 Zoom Lens! Be sure that you have read this manual and understood its content before using the product.



△ Read this operation manual carefully to familiarize yourself with its contents and ensure that you can operate the product properly. Keep the Instruction Manual in a place where it can easily be referenced whenever required. If you are still unable to solve the problem by reading the manual, please contact our after-sales service for further technical support.

Features

- The Laowa OOOM is a cinema zoom lens that offers a 25-100 focal range with a constant $t/2.9$ aperture for S35 sensors (cover 33mm image circle). This lens is also a 4X optical zoom lens.
- Parfocal
It'll hold focus throughout the zoom range. When shooting movies, the focus puller doesn't need to refocus when the focal range is changed, which can increase efficiency.
- Almost Zero Focus Breathing
Different from the common lens, this lens won't have a dramatic change of angle of view throughout the zoom range. It offers a stable image and almost no focus breathing.
- Constant $t/2.9$ Aperture
A fast $t/2.9$ aperture that keeps the footage clean and elevates image quality.

Precautions

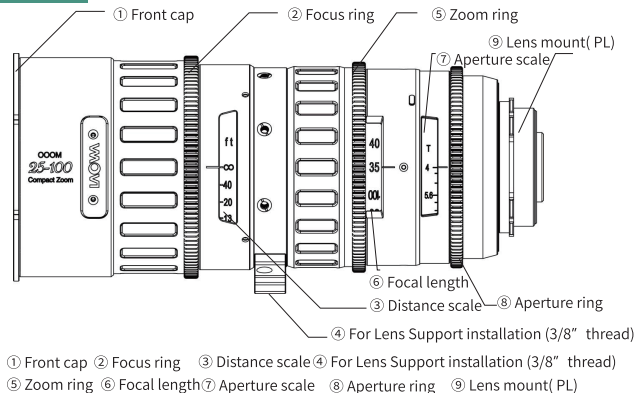
⚠ Precautions

- Do not disassemble, modify the lens by yourself. Do not touch the internal parts that become exposed as the result of external force.
- Do not leave the lens where it will be exposed to high temperatures, such as in direct sunlight and an enclosed vehicle. Excessive heat may deform the glass elements and other parts of the lens.
- Do not leave the lens under the sun. If sunlight is focused on a nearby object, it may cause a fire. Keep the lens cap attached when it's not in use.
- Do not place the sun in the frame center when shooting with backlight. Doing so might cause a fire or harm your eyes.

Maintenance Precautions

- Do not touch the surface of the lens directly. Brush off any dust with a blower. Wipe the surface with a cleaning cloth or a lens tissue.
- Try a circular motion from the center outward to remove oil, finger prints and grime on the lens surface.
- If your lens is brought directly from a cold place to a warm place, condensation may appear on the lens. To avoid this, be sure to take some action to protect the lens.

Nomenclature



Supplied Accessories

Front lens cap*1, Rear lens cap*1, Y-shaped holder*1, Interchangeable Bayonet (E)*1, Interchangeable Bayonet (EF)*1, L-shaped lever*1, Shims*5, 114mm step-up ring*1, Users' Manual*1, Warranty card*1, Desiccant*1

1.33x Rear Anamorphic Adapter and 1.4x Expander (Sold Separately)

■ 1.33x Rear Anamorphic Adapter

- This 1.33x rear anamorphic adapter is made for the Laowa OOOM 25-100mm t/2.9 Zoom lens. This adapter enables you to capture footage with a 2.35:1 aspect ratio on your camera with a 16:9 sensor without losing image resolution. This versatile tiny adapter can be worked with most prime lenses and zoom lenses.

■ 1.4x Expander

- After mounting this Laowa 1.4x expander, this 25-100mm t/2.9 zoom lens will become a 35-140mm t/4.0 zoom lens covering 46.5mm image circle.

Instructions

■ To attach the Lens

- Remove the rear lens cap. Align the mounting index on the lens bayonet^⑨ with the mounting index on the camera, then insert the lens into the camera mount and rotate it in the direction for your lens version until it locks. Do not use excessive force during installation to avoid damage to the bayonet. Turning the locking ring on the camera is required for PL version.

■ To remove the lens

- Turn the camera off. While pressing and holding the lens release button on the camera, rotate the lens in the reverse direction for attaching the lens until it stops, then detach the lens. The PL version needs to release the locking ring to remove the lens.
- After attaching the lens, please try to rotate the lens to make sure it mounted onto the camera properly.

■ Focusing

- This is a fully manual lens. Rotate the focusing ring② slowly to get focus. Turn the focus ring slowly and gently to prevent the focus mechanism from damage.

■ Zooming

- Rotate the zoom ring manually or with focus follow to change focal length. Turn the focus ring slowly and gently to prevent the focus mechanism from damage.

■ Setting the Aperture

- According to the shooting situation and desired depth of field, rotate the aperture ring⑧ on the lens to the corresponding aperture. This lens cannot provide actual aperture value to the camera since there's no CPU data.

Replacing the Mount

- 1、Turn the zoom ring to 100mm end.

- 2、Detach the rear ring by rotating it counterclockwise.

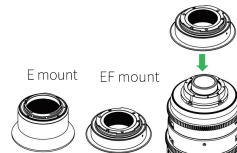


- 3、Unscrew the 6 screws on the bayonet with a hex screwdriver.



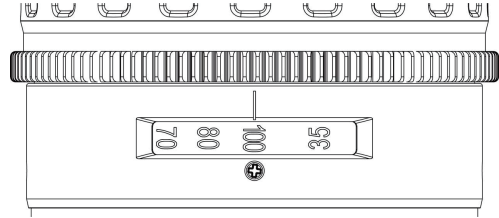
- 4、Put on the new bayonet and tighten the 6 screws with a hex screwdriver.

- 5、Attach the rear ring by rotating it clockwise.

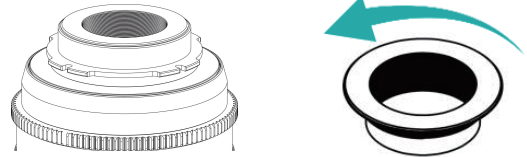


Adjusting the Parfocal accuracy

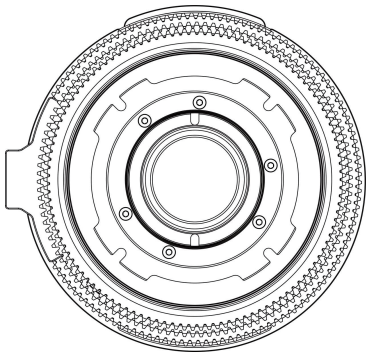
- New lenses may need to adjust parfocal accuracy because the flange of some cameras would change a little bit during usage. Test procedure: switch to 100mm end, turn the focus ring to infinity to get focus, then zoom to 25mm, recheck the focus. If the focus is achieved, there's no need to adjust the parfocal accuracy. If not, try to adjust it according to the following steps. Adjusting method: Keep the focus ring still. Then zoom to 25mm end to confirm if the focus is achieved. If the scale value of the zoom ring on the 25mm end is smaller than it on 100mm end, you have to increase the thickness of the shim. If the scale value of zoom ring on 25mm end is bigger than it on 100mm end, you have to decrease the thickness of the shim. When the scale value on the 25mm end is the same with the value on 100mm end, the adjusting process is completed.



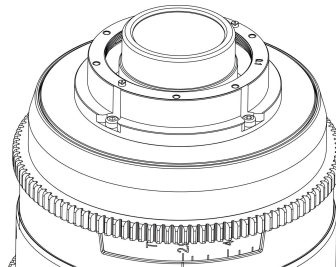
- 1、Detach the rear ring manually by rotating it counterclockwise.



- 2、Unscrew the 6 screws on the bayonet with a hex screwdriver.

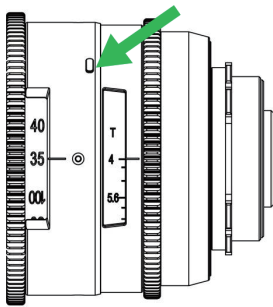


- 3、Modify the thickness of the shim (the matching shims are 0.1mm, 0.05mm, 0.08mm and other specifications), attach the bayonet, test it on the camera until the focus is achieved on infinity.



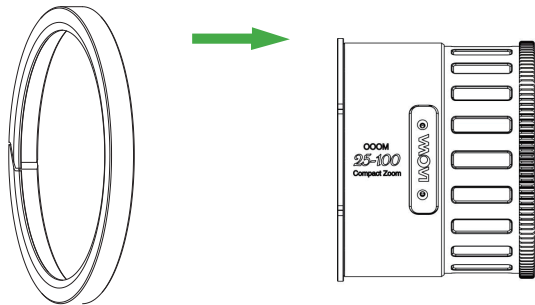
How to change the scale when using the lens with the 1.4x expander

- Press the button between the aperture ring and zoom ring, rotate it 180 degree clockwise until it is locked with a “click”. The maximum aperture now is $t/4.0$ and the zoom range is 35-140mm.



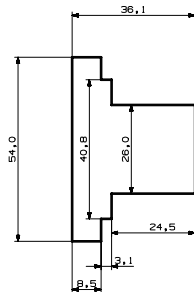
How to use the step-up ring

- Put the step-up ring on the front part of the lens. It works with the 114mm matte box.

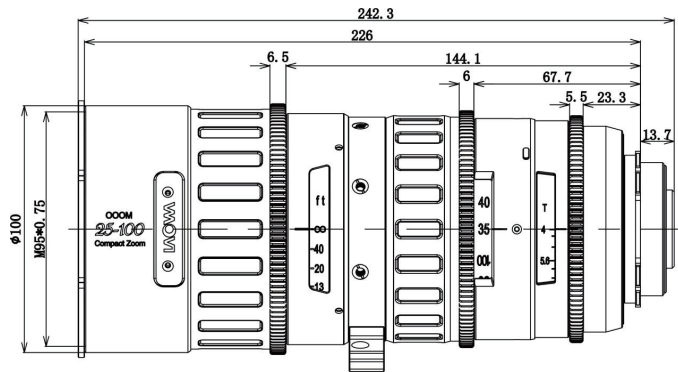


How to use the slot plate

- For some cameras, there is a low-pass filter between the bayonet and sensor. Before mounting the anamorphic adapter, use the slot plate to check if the space between the sensor and the bayonet of your camera is enough for mounting. If it doesn't fit, do not use the anamorphic adapter or detach the low pass filter first.



Appearance



Specifications

OOOM 25-100mm t/2.9 Zoom	
Format	S35
Focal Distance	25-100mm
T-stop	T2.9-22
Lens Construction	20 elements/ 16 groups (ED glass x 4)
Aperture Blades	9
Min. Focusing Distance	60cm
Image Coverage	φ31.4mm
Max. Angle of View	64°~18°
Max. Magnification	0.25x
Weight	About 2.5kg
Aperture Control	Manual (rotation of aperture ring: 50.5°)
Zoom Control	Manual (rotation of zoom ring: 163 °)
Focus Control	Manual (rotation of focus ring: 300 °)
Dimensions	φ102*240mm
Front Diameter	100mm
Filter Thread	95mm
Mounts	PL, Interchangeable with EF & E





New Idea . New Fun.